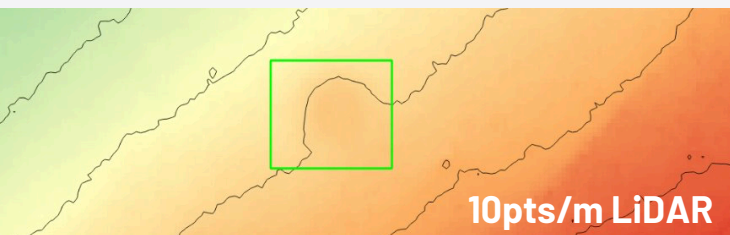




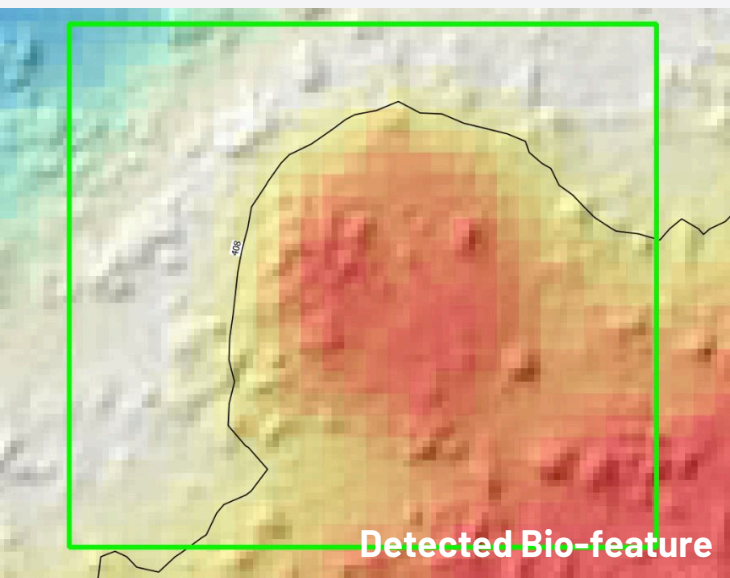
***"This data single-handedly sped up our POW field validation and mobilisation, saving us time and rework."***

Exploration Manager











***"The data science behind this technique adds reliability and fidelity to our evidence-based approach to conservation."***

Principal, Biodiversity







## ABOUT US

 2007 Founded	 240+ Customers	 AI Enabled	 Immediate Capture
 +8M km <sup>2</sup> Imagery collected	 ~2 pixels Image accuracy	 2-35cm Image resolution	 <2weeks Processing

Our Australian-made technology brings a unique set of capabilities to the Earth Observation domain, allowing you to innovate with us for your specific applications. Our portable, configurable, and interoperable sensor delivers survey-grade Multispectral, LiDAR, and Thermal imaging concurrently, making it a game-changer for wide-scale environmental monitoring.

You can access your analysis-ready, highly accurate geospatial data package via our platform, or combine this with Outline's industry-leading Machine Learning and Insights to detect new patterns of life and understand how your environment changes over time.

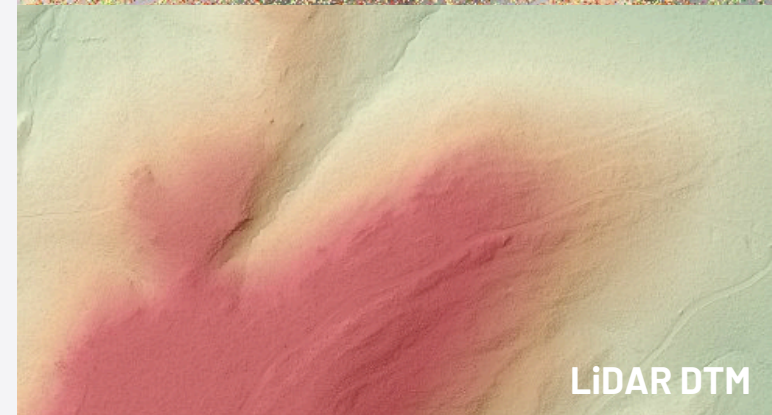
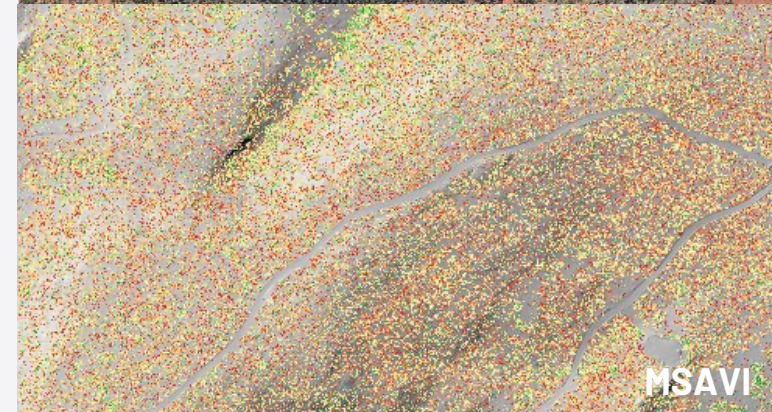
-  1300 945 216
-  [hello@outlineglobal.com.au](mailto:hello@outlineglobal.com.au)
-  [www.outlineglobal.com.au](http://www.outlineglobal.com.au)
-  Offices Australia-wide



  
Imagery

  
LiDAR

  
Insights





## SPECIFICATIONS

	IMAGERY	LiDAR
Capture areas	2-50,000 km <sup>2</sup>	1 - 5,000 km <sup>2</sup>
Resolution	2 - 35 cm	From 2 up to 40 pts/m <sup>2</sup>
Accuracy	Horizontal from 2 pixels RMSE Vertical	Horizontal 100mm RMSE Vertical 50mm RMSE



### Outline Insights™

Custom AI Models combining Geospatial and Computer Vision techniques to monitor environmental changes and nature-based phenomena.

## INDUSTRIES



FORESTRY



CONSTRUCTION



URBAN



ENVIRONMENTAL



MINING

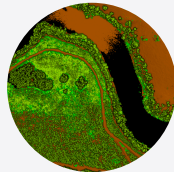


PEST MANAGEMENT

## EQBE™

Outline's latest Environmental Block Engine brings traceable and verifiable environmental changes and complexities to a single workflow. EQBE integrates nature-based datasets and mandatory information into report-ready formats.

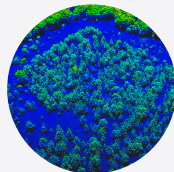
EQBE™ provides comprehensive insights into the following geospatial layers:



### TERRAIN

**Digital elevation, surface, and height modelling**

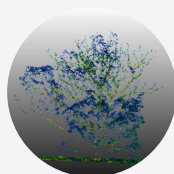
Slope, contours, and landform stability analysis, including erosion detection and severity estimates.



### HYDRO

**Soil, waterbodies, river tributary, and drainage**

Hydro runoff analysis, tailing dams, catchment risk assessment.



### CANOPY

**Vegetation coverage, foliage, species classification**

LiDAR-derived canopy height and coverage modelling, vegetation health and growth predictions.

**WE OUTLINE  
REALITY TO  
SHAPE CHANGE.**

**OUR AI STARTS WITH  
AERIAL  
INTELLIGENCE**

**AND WE HAVE AN  
AI TOOLKIT  
TO HELP YOU SEE  
MORE.**

## CLIENTS

